

Trade Fair News



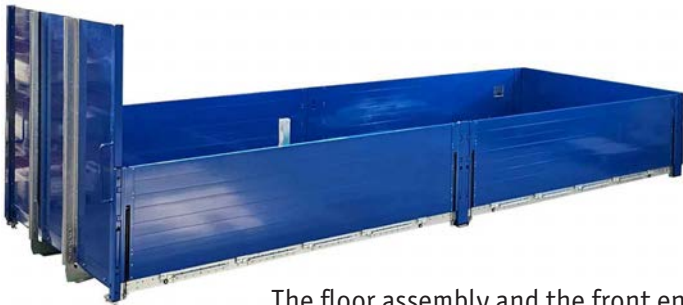
The quick information for our customers



Join us in Hanover from **Sept. 17 - 22, 2024 / Hall 27, C16.**

New kit for drop side bodies

Our new kit for drop side bodies celebrates its premiere in Hanover. The kit will be delivered completely on a transport frame. **You can assemble it in just 5 man hours.**

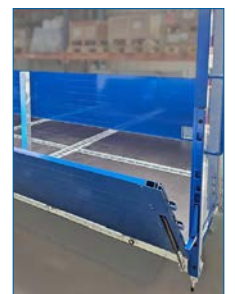


The floor assembly and the front end are supplied pre-assembled. The **floor assembly** includes **all cross beams**, the **outer frame** including the **dropside hinges** and the **assembled floor plates with receptacle for plug-in steel stanchions**. Lashing straps can be attached here and in the outer frame.

The **front end** consists of robust **front end supports** and **steel stanchions with mounted corner stanchions** as well as sturdy aluminum **hollow chamber profiles** and a **plywood kick plate**. It has no lateral offset and therefore guarantees a full through-loading width.



The kit is available in standard RAL colors. The kit also includes a further 4 to 6 **folding stanchions** and **drop sides** made from 25 mm hollow chamber profiles, including **pre-assembled receptacles for the side and rear stanchions**. The powerful dropside lifters, which, like the integrated steps, make everyday transportation much easier, should be emphasized.



More options for insulated kits

As an **alternative to the fixed longitudinal partition wall**, we offer you a **removable longitudinal partition wall in segment design** for our tried-and-tested insulated kits in the 25x-2 series. The individual segments are firmly attached to each other. The desired length can be set via the number of segments. In the event that the



partition wall is not required, there are corresponding parking positions on the side wall for the segments. **At our stand, we will be showing a multi-compartment body with a 2/3 to 1/3 division.**

The **sliding and folding cross partition wall** can be easily moved along the entire length of the vehicle using the guide rails attached to the roof and pushed into a vertical position against the goods.



An integrated floor stopper locks the wall securely via an operating lever.

lifting roof is available. With the 180-2 series, **you can set up the body in just 6 man-hours.**



Schneider Swap Systems

A **modular system with over six hundred interchangeable system variants covers the various requirements**, for example via height adjustments (HV) for the parking and system heights (SH), and fits all standard chassis.



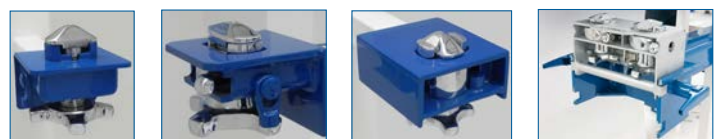
With the sophisticated modular system, you can produce in a time-saving and more cost-effective way than so-called factory systems. At the same time, you minimize the downtime of the carrier vehicles.



As an alternative to the previous locking systems with height adjustment, we now also offer our popular **Liftlock locking system**, adapted for these systems.

Container locks and support legs

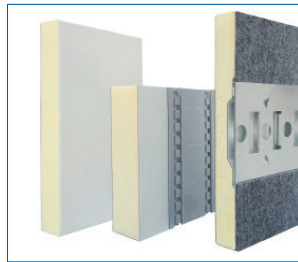
We also show you some examples from our extensive range of container locking systems and support legs.



Panels and floors

You will find examples from our panel range with thicknesses from 30 to 85 mm, possible top layer variants and various features such as **double decking system and cargo restraint tracks.**

We would also be happy to advise you on panels **with corrugations and reinforcements** as well as with lathered **conduits** and with cut-outs for **cooling units**, doors and flaps.



You can also see **our new, particularly lightweight honeycomb floor for small van boxes.**

This gives you **additional payload.** For a body 4.2 m long and 2.2 m wide, for example, this is 50 kg compared to the conventional 18 mm plywood floor.



Curtainsider kits

The kits are particularly progressive. This starts with the **fully assembled floor assembly** with lashing brackets in the outer frame and optional airline rails embedded lengthways or crossways in the floor.



A **special highlight is the fully assembled roof**, whether as a **fixed roof or sliding roof.** Furthermore, a



AluTeam Fahrzeugtechnik GmbH
Brockhagener Str. 88, 33649 Bielefeld
Tel. + 49 (0)521 - 41 73 11 - 0
info@aluteam.de / www.aluteam.de

AluTeam Fahrzeugtechnik Wolfhagen GmbH
Hans-Böckler-Straße 4, 34466 Wolfhagen
Tel. + 49 (0)56 92 - 609 - 0
wolfhagen@aluteam.de / www.aluteam.de

Schneider Fahrzeug- und Containertechnik GmbH
Brockhagener Straße 92, D-33649 Bielefeld
Tel. + 49 (0)521 - 41 73 12 - 0
info@schneider-fc.de / www.schneider-fc.de

